

Lights Out

for orchestra

Evan Gardner

2005/2006

Instrumentation

Flute 1
Flute 2 (double on Piccolo)
Oboe 1
Oboe 2 (double on English Horn)
Bb Clarinet 1
Bb Clarinet 2 (Double on Bass Clarinet)
Bassoon
Contrabassoon

Horn in F1
Horn in F2
Horn in F3
Horn in F4

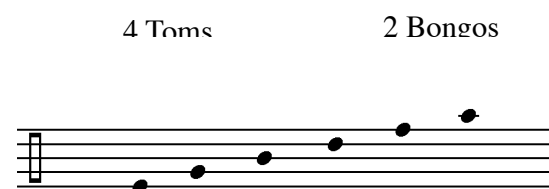
Trumpet in C1
Trumpet in C2

Trombone 1
Trombone 2
Bass Trombone

Piano

Percussion 1

Glockenspiel
Crotales
Bass Drum
Large Tam
2 Bongos
4 Toms
Güiro
Suspended Cymbal
Triangle
Vibraslap
Bass Drum



Percussion 2

Tubular Bells
Suspended Sizzle Cymbal
Vibraphone
Bass Drum
Crotales (Eb, E)
Timpani (Medium/Low)
Large Tam

Harp

Strings

Score is transposed.

Performance Notes



Quarter tone sharp



Quarter tone flat



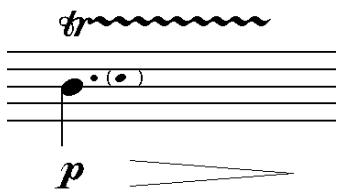
In Strings, unmeasured tremello
In Winds and Brass, Flutter Tongue

n.

Niente



Dampen



Notes in parathenses with trill sign indicate note that is to be trilled.

Percussion Symbols



Sticks



Soft Mallets



Hard Mallets



Bowed



Soft Hammer



Hard Hammer

Piano Notation

Piano is notated in 4 clefs, encompassing the entire range of the piano.

Sostenuto pedaling is notated by attaching the indicated chord to a pedal extension line on the bottom of the clef.

The sustain pedal is indicated with *Ped.* and a pedal extension line.

Notes marked as Harmonics are silently depressed and then used to create resonance from the sympathetic vibration of other notes

The image shows a piano score with four staves. The top two staves are in treble clef, and the bottom two are in bass clef. The score includes a piano (Pn.) marking, dynamics of *f*, *mf*, and *f*, and a trill marked with a '3' over a bracket. A pedal extension line is shown at the bottom of the bass clef staves, labeled 'Ped'.

4/4 3/4 4/4 3/4

Fl. 2

Ob. 1

Ob. 2

B♭ Cl. 1

B♭ Cl. 2

Bsn.

C. Bn.

Hn. 1

Hn. 2

Hn. 3

Hn. 4

C Tpt. 1

C Tpt. 2

Tbn. 1

Tbn. 2

B. Tbn.

50 51 52 53 54 55 56 57

p, *n.*, *pp*, *mf*, *pp*

sord straight, *p < mf*, *pp*

sord cava, *pp*

50 51 52 53 54 55 56 57

Pn.

Perc. 1

Perc. 2

Hp.

Glockenspiel

Vibraphone

Timpani

Bass Drum

pp, *p*, *mf*, *mp*, *f*, *ppp*, *mf*, *p*

4/4 3/4 4/4 3/4

Vln. I (1)

Vln. I (2)

Vln. II (1)

Vln. II (2)

Vla. (1-2)

Vla. (2)

Vc. (1)

Vc. (2)

Cb. (1)

Cb. (2)

50 51 52 53 54 55 56 57

p, *n.*, *mf*, *pp*, *ppp*, *mf*, *p*, *pp*, *mf*, *pp*, *p*

pizz., *arco legno*, *tasto*, *nat.*

sul II, *nat.*, *sul IV*, *nat.*

3/4 58 59 7/8 60 4/4 61 3/4 62 63 7/8

Fl. 2 *n.*
pp
fp ff
mf
pp

Ob. 1
ff
p *mf* *pp*

Ob. 2
ff
p *mf* *pp*

Bb. Cl. 1
mf
p *f* *p* *ff*
fp *pp*

Bb. Cl. 2
mf
p *f* *p* *ff*
p *n.*

Bsn.
p
mf
p *f* *p*

C. Bn.
p
mf
p *f*

Hn. 1
p *f* *p*

Hn. 2
p *f* *p*

Hn. 3
p *f* *p*

Hn. 4
p *f* *p*

C. Tpt. 1
p *f* *p*
sord
straight
p *f* *p* *f* *p*

C. Tpt. 2
p *f* *p*
sord
straight
p *f* *p* *f* *p*

Tbn. 1
p *f* *p* *f* *p*

Tbn. 2
p *f* *p* *f* *p*

B. Tbn.
p *f* *p* *f* *p*

58 59 60 61 62 63

Pn.
p *f* *p*
f *p*
f *p*
f *p*
f *p*
f *p*

Perc. 1
p
Bass Drum
mf
Cymbals
p *ff*
Bongos/Toms
p *mf* *ff*

Perc. 2
f *p*
f *p*
p *ff* *p*
p
f *p*
f *p*

Hp.
mf
pp
mf *f*

3/4 58 59 7/8 60 4/4 61 3/4 62 63 7/8

Vln. I (1)
mf *p* *mf*
nat.
p *f*
Sca
p *ff* *p* *pp* *f*

Vln. I (2)
mf *p* *mf*
pont.
nat.
p *f*
Sca
p *ff* *p* *pp* *f*

Vln. II (1)
p *mf* *p* *mf*
nat.
p *f*
Sca
p *ff* *p* *pp* *f*

Vln. II (2)
p *mf* *p* *mf*
nat.
p *f*
Sca
p *ff* *p* *pp* *f*

Vla. (1-2)
p *mf* *p* *mf*
pont.
p *ff* *p* *pp* *f*

Vla. (2)
p *mf* *p* *mf*
pont.
p *ff* *p* *pp* *f*

Vc. (1)
p *mf* *pp* *mf*
Sca
p *ff* *p* *pp* *f*

Vc. (2)
p *mf* *pp* *mf*
Sca
p *ff* *p* *pp* *f*

Cb. (1)
mf *f*
uniss.
p *ff* *p* *pp* *f*

Cb. (2)
mf *f*
uniss.
p *ff* *p* *pp* *f*

FL 2
Pic.
Ob. 1
Ob. 2
Bb. Cl. 1
Bb. Cl. 2
Bsn.
C. Bn.
Hn. 1
Hn. 2
Hn. 3
Hn. 4
C. Tpt. 1
C. Tpt. 2
Tbn. 1
Tbn. 2
B. Tbn.

64 3/4 65 4/4 66 3/4 67 7/8 68 3/4 69

Pn.
Perc. 1
Perc. 2
Hp.

64 65 66 67 68 69

Vln. I (1)
Vln. I (2)
Vln. II (1)
Vln. II (2)
Vla. (1-2)
Vla. (2)
Vc. (1)
Vc. (2)
Cb. (1)
Cb. (2)

64 3/4 65 4/4 66 3/4 67 7/8 68 3/4 69

FL 2

Pic.

Ob. 1

Ob. 2

Bb. Cl. 1

Bb. Cl. 2

Bsn.

C. Bn.

Hn. 1

Hn. 2

Hn. 3

Hn. 4

C. Tpt. 1

C. Tpt. 2

Tbn. 1

Tbn. 2

B. Tbn.

Pn.

Perc. 1

Perc. 2

Hp.

Glockenspiel

Cantales

Vibraphone

Vln. I (1)

Vln. I (2)

Vln. II (1)

Vln. II (2)

Vla. (1-2)

Vla. (2)

Vc. (1)

Vc. (2)

Cb. (1)

Cb. (2)

94 95 96 97 98 99 100 101 102

Fl. 2 *n.* *pp* *n.* *p* *n.*

Pic. *pp* *n.* *n.* *p* *n.*

Ob. 1

Ob. 2

Bb. Cl. 1 *p*

Bb. Cl. 2 *n.*

Bsn.

C. Bn.

Hn. 1 *n.* *(sord.)* *ppp*

Hn. 2 *n.* *(sord.)* *ppp*

Hn. 3 *n.* *(sord.)* *ppp*

Hn. 4 *n.* *(sord.)* *ppp*

C. Tpt. 1

C. Tpt. 2

Tbn. 1

Tbn. 2

B. Tbn.

94 95 96 97 98 99 100 101 102

Pn.

Perc. 1 *n.* *< p* *n.* *< pp*

Perc. 2 *mf* *p* *mf* *pp* *pp* *n.* *< pp* *n.* *< pp*

Hp. *p* *f* *p* *p* *p*

Vln. I (1) *n.* *(sord.)* *ppp* *p* *n.* *pp*

Vln. I (2) *n.* *(sord.)* *ppp* *p* *n.* *pp*

Vln. II (1) *n.* *(sord.)* *ppp* *n.* *pp* *n.*

Vln. II (2) *n.* *(sord.)* *ppp* *n.* *pp* *n.*

Vla. (1-2) *(sord.)* *ppp* *n.* *pp*

Vla. (2) *(sord.)* *ppp* *n.* *pp*

Vc. (1) *(sord.)* *ppp* *n.* *ppp*

Vc. (2) *(sord.)* *ppp* *n.* *ppp*

Cb. (1) *(sord.)* *ppp*

Cb. (2) *(sord.)* *ppp* *ppp*

4/4 103 104 5/8 105 3/4 106 5/4 107 4/4 108 3/4 109 4/4 110 111

Fl. 2
Pic.
Ob. 1
E. Hn.
Bb. Cl. 1
Bb. Cl. 2
Bsn.
C. Bn.
Hn. 1
Hn. 2
Hn. 3
Hn. 4
C. Tpt. 1
C. Tpt. 2
Tbn. 1
Tbn. 2
B. Tbn.

103 104 105 106 107 108 109 110 111

Pn.
Perc. 1
Perc. 2
Hp.
Vln. I (1)
Vln. I (2)
Vln. II (1)
Vln. II (2)
Vla. (1-2)
Vla. (2)
Vc. (1)
Vc. (2)
Cb. (1)
Cb. (2)

4/4 103 104 5/8 105 3/4 106 5/4 107 4/4 108 3/4 109 4/4 110 111